

Volunteer Workers Accommodation Guide

The Society, with agreement and active support from the Company, has created a Hostel upstairs in the main station building at Llanuwchllyn. In addition, we have a well-equipped Caravan sited in the station yard, near to the engine shed. Both are available on a pre-booked, first come basis only.

The Society asks each member to **make a donation for each night's stay** to cover the running costs of both facilities.

Should either or both of these facilities be unavailable, the railway can advise on local caravan and campsites, bed and breakfast and hotels. Please refer to the accommodation guide pages on the company website or consult the manager.

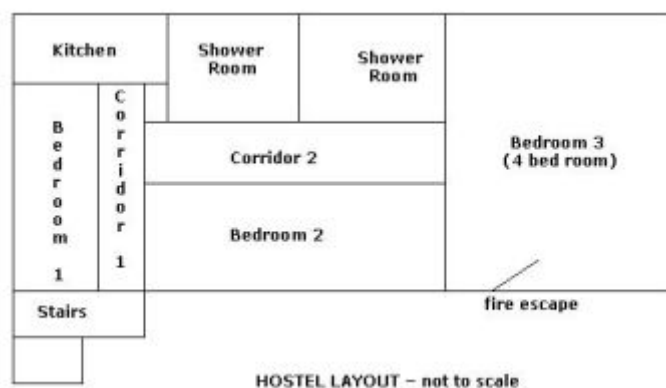
Hostel

The Hostel is located within the roof space of the main station building, at Llanuwchllyn, and comprises three bunkhouse type bedrooms, two shower/toilet units and a communal kitchen.

The whole of the Hostel (and station building) is deemed to be a **No Smoking** zone.

Sole access to the Hostel is via stairs from the booking hall. There is a lockable fire door at the top of the stairs giving access to the Hostel corridors. Work boots must not be worn past this door.

Occupants will be trusted with keys for the Hostel and station building entrance double doors facing the car park and engine shed.



Kitchen

The Hostel kitchen is equipped with a sink, fridge/freezer, microwave, toaster, electric kettle, plates, mugs cutlery table, benches and chairs, food storage cupboards, cleaning materials and equipment plus a heater with thermostat and frost-stat.

All Hostel occupants are expected to:

- Keep the kitchen and all its appliances and equipment clean and tidy at all times
- Return all plates, mugs etc to the kitchen after use - not to dump them around the railway
- Clean up prior to departure ensuring that all food is removed and waste is disposed of
- On departure, unplug the heater, toaster, microwave and fridge/freezer from the electricity supply

Bala Lake Railway Society

Cymdeithas Rheilffordd Llyn Tegid

All cooking and/or food storage must take place in the kitchen (or the station kitchen downstairs **only** by prior per occasion agreement from the Railway Manager).

Bedrooms

Each bedroom is designed for multi-occupancy. Each room has two or more beds but no bed linen or pillows. Bring your own pillows and sleeping bags/bed linen.

The largest room would be expected to sleep 4 and includes access to the Fire Escape, access to which must be kept clear at all times.

The other two rooms have facilities for 2 occupants, making a total normal occupancy of 8 persons.

All rooms **must** be kept clean and tidy at all times and particularly at departure.

Shower/Toilet Rooms

The two Shower/Toilet rooms are located on the left hand side of corridor two (which leads to the large room and fire escape).

Each room is equipped with a flushing toilet pan, washbasin, mirror, electric-shaver point and shower cubicle.

The shower heater switch is located outside on the corridor wall for safety.

Toiletries and towels must be provided by occupants though there will normally be a toilet roll.

All Hostel occupants must keep each of the Shower/Toilet rooms clean at all times - failure to do so will result in that person being asked to vacate the premises immediately, or debar that person from staying in the Hostel on future occasions.

Note: The showers are for use by ANY person working on the railway, at the end of their working day.

HOLIDAYS

North Wales is a very beautiful part of the UK and it is a popular holiday destination for many thousands per year. The Society accommodation however, is **NOT** provided to be used as a holiday home for non-working members.

There are plenty of Bed & Breakfast establishments, Hotels and caravan/camping sites in the area. Society members trying to use the Hostel or Caravan in this way are depriving the local population of their main summer income source. This will cause problems between the Railway and it's neighbours and damage the goodwill the Society has strived to establish over the past 30+ years.

Working members, will of course, be allowed time off from their volunteer duties.

The governing rule is simple:

Does your number of non-volunteering days outweigh the number of volunteering days during the period you are planning to stay in the Society Hostel or Caravan?

If the answer is **YES** then you should book a stay with a holiday accommodation provider.

Bala Lake Railway Society

Cymdeithas Rheilffordd Llyn Tegid

If the answer is **NO** then the Society Hostel or Caravan can be booked, if available. Both facilities are for multi-occupancy and available on a first come, first booked basis.

SECURITY

Hostel

Each Society member is entrusted with the Station Shop and Hostel security when the booking is accepted. We expect each member to treat all of the station with respect and keep all doors locked outside of operating hours.

Caravan

It is in a relatively exposed position on the station site and therefore demands that all members are vigilant in securing the caravan doors and windows at **ALL** times.

Abuse of these facilities could see them withdrawn from individuals!

Society Caravan

The Society owned Caravan is located almost opposite the old stone grain store, between the engine shed and the carriage shed in the station yard.

Occupants can normally park their vehicles alongside or in front of the premises.

Just like the Hostel the Caravan is meant for multi-occupancy, however some care needs to be taken because some of the sleeping facilities are converted each night from open areas.

Each occupant needs to provide their own pillows and sleeping bags/bed lined.

The Caravan is equipped with heater, microwave, fridge/freezer and plates, mugs and cutlery. Cooking is by propane gas-bottle powered cooker. The bottle, when not in use is stored inside the Caravan. When the place is occupied it is placed outside and connected by hose.

Cold water and electricity are connected to the caravan, however the main station toilet facilities have to be used.

All occupants are required to keep the Caravan locked at all times (to safeguard both their and Society provided property) and to keep the facilities clean and tidy. It is especially important to clean up before departure, making sure all food is disposed of correctly and litter removed.

The Societies facilities are readily available on a pre-booked, multi-occupancy sharing rule to all paid-up and life members of the Society who have arranged to provide volunteer labour to the railway.

All bookings to be made direct with the Railway Manager

Liability

Neither the Society nor the Railway Company accept any liability for loss of personal belongings, however we may charge Hostel or Caravan dwellers for loss of Society property caused by lax security.